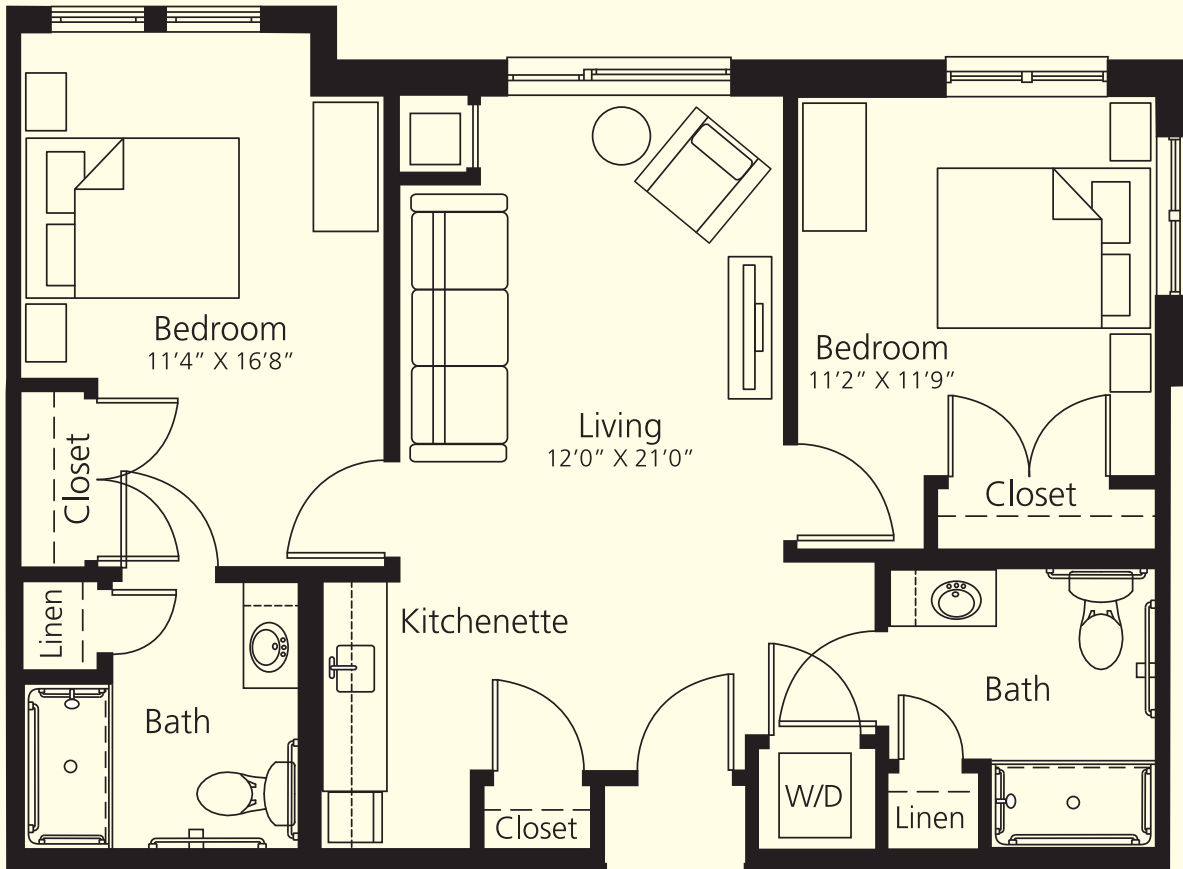


Assisted Living Two-Bedroom Apartment Floor Plan



Living room, two bedrooms, kitchenette, two baths
Approximate size: 833 square feet



*To schedule your personal appointment with Matt Scherr,
call 970-989-2500 or email: mscherr@augustanacare.org*

CastlePeak

by  AugustanaCare

Assisted Living · Memory Care · Short-Term Rehab · Long-Term Care
(970) 989-2500 | 195 Freestone Road · P.O. Box 5980 · Eagle, CO 81631
castlepeakinfo@augustanacare.org · www.castlepeak.org

