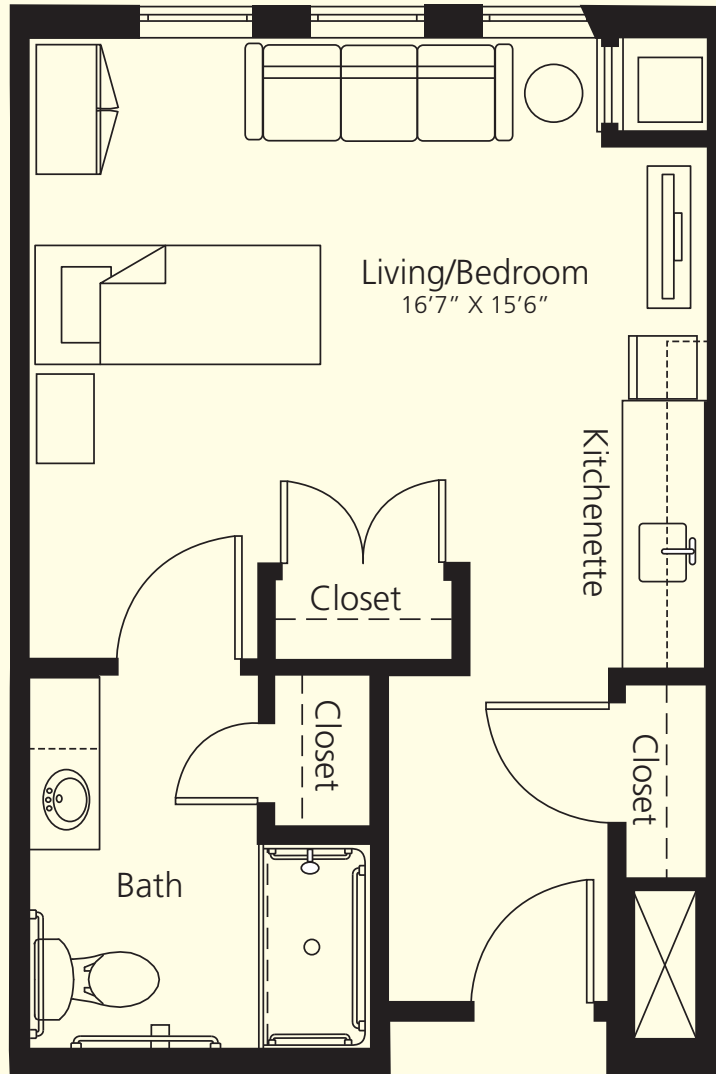


Assisted Living Suite Apartment Floor Plan



Living/bedroom, kitchenette, private bath
Approximate size: 402 square feet



*To schedule your personal appointment with Matt Scherr,
call 970-989-2500 or email: mscherr@augustanacare.org*



Assisted Living · Memory Care · Short-Term Rehab · Long-Term Care
(970) 989-2500 | 195 Freestone Road · P.O. Box 5980 · Eagle, CO 81631
castlepeakinfo@augustanacare.org · www.castlepeak.org

